

**LLOYD
CORPORATION
COMPETING
TEMPORALITIES**

6 June – 6 July 2013

Private view 5 June, 6–9 pm

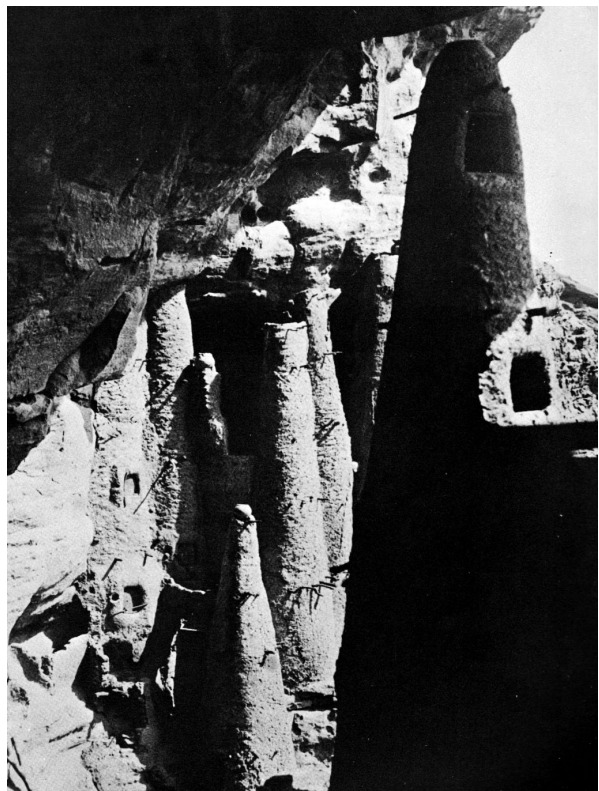
CARLOS/ISHIKAWA

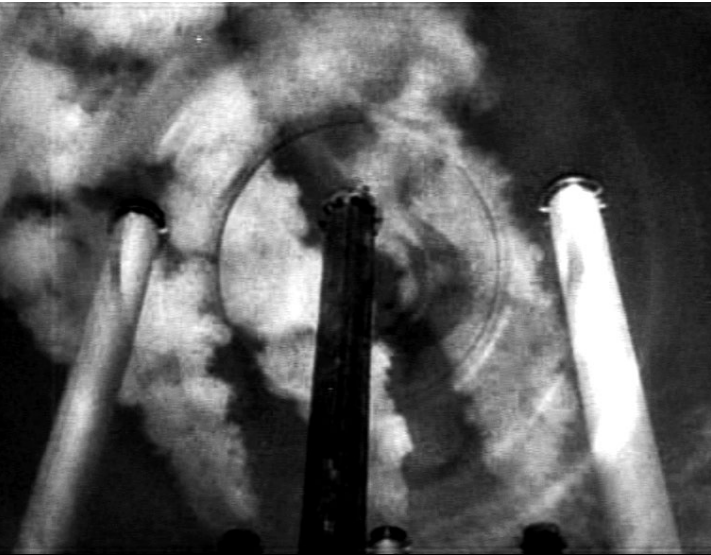
Unit 4, 88 Mile End Road

London E1 4UN

www.carlosishikawa.com

+44 (0) 20 7001 1744





For years the same require-
ments, the same values,
Craftsmanship and innovation,
Pursuit of perfection, aspiration
to the highest,
Questioning the ordinary,
superior quality,
Taking passion to the extreme,
In every single detail.



The thundering machines
spluttered and stopped.
They'd built a house of straw,
Gone now, swept away, for
reasons long forgotten.
A bleached and fractured world.



Motorised,
A white line nightmare,
Tilt-and-turn. Slump,
Debris, slides,
The violence of its ups and
downs.



A time of chaos, ruined dreams,
This wasted land.
Only those mobile enough
to scavenge, brutal enough
to pillage would survive,
A philosophy according to which
time is everything and man
is nothing.



The ideas of the past were discarded. Products were created that addressed the customer even before they were plugged into the mains. Whilst you enjoyed being in control of almost everything, you could rest assured that we did the hard work of making sure this universe was available to you. Assembling every tiny wire and screw. All done by hand.

